

Saturn[®]

63-010-02

GAS COOKING PLATE



GB

GAS COOKING PLATE

Dear Buyer!
We congratulate you on having bought the device under trade name "Saturn". We are sure that our devices will become faithful and reliable assistance in your housekeeping.

Avoid extreme temperature changes. Rapid temperature change (e.g. when the unit is moved from freezing temperature to a warm room) may cause condensation inside the unit and a malfunction when it is switched on. In this case leave the unit at room temperature for at least 1.5 hours before switching it on. If the unit has been in transit, leave it indoors for at least 1.5 hours before starting operation.

Description



1. Cover
2. Grate of the desktop
3. Medium burner
4. Burner control knobs
5. Housing board
6. Large burner

During buying product please pay attention, that date of sale, sign and stamp of seller should be put in guarantee book.

Ask the seller to check serviceability, efficiency and completeness of the item.

Safety requirements

- Responsibility for the safe operation of the board and for its proper maintenance is laid on the owner of a plate.
- Before using the plates carefully read the instruction manual.
- Use of the device, subject to the safety requirements of this Guide - safely.
- Service life – 2 years.

WARNING!

For household use. Explosive.

Do not:

- Use the stove to heat the premises.
- Turn on a stove and use it with no draft in the chimney.
- Close the room in which a fresh air is required for the gas combustion and exhaust gases.
- Operation of the gas cookers in areas with high humidity (over 80%) (when the ceiling, walls, floors and objects in the room are covered with moisture).
- Use the stove if gas leaks or other problems.
- Operate the oven without handles or knobs with faulty turn burners.
- Put flammable materials (paper, cloth, etc.) on the stove.
- Dry cloths over the stove.
- Keep water and other liquids out of burners.
- Let working stove unattended.
- Allow preschool children to use their own plate or play with it.
- This appliance is not intended for use by persons (including children) with reduced physical, sensory or mental capabilities, or lack of experience and knowledge, unless they have been given supervision or instruction concerning use of the appliance by a person responsible for their safety.
- Leave children unattended near a running or hot plate.
- Use steam for cleaning the plates.
- Modify the board, recycle it or use parts that are not recommended by the manufacturer.
- Disassemble and repair the device by own forces and means.
- The room in which a gas cooker is installed must always be ventilated and there will be free access to the outside air.

NEVER close lattice vents!

WARNING! During normal operation a gas stove and a gas pipeline should not expose the smell of gas.

If you smell gas in the room do the followign:

- Quickly turn off the gas stove immediately.
 - Close the valve on the common gas pipeline.
 - Open the windows and ventilate the area thoroughly.
 - Immediately call emergency services in the gas industry by phone 104.
 - Until the gas leak, to prevent explosion, do not do anything connected with sparking: not light a fire, not turn on or off electrical appliances and lighting, do not smoke.
 - When using a faulty gas stove or in case to fulfill the above-mentioned rules of operation you may be subject to poison of gas or carbon monoxide (CO), which is in the products of incomplete combustion of the gas.
- The first signs of poisoning are: heavy-headedness, palpitations, ringing in the ears, insanity, general weakness.
 - It also can cause nausea, vomiting, shortness of breath, disruption of traffic.
 - The victim may suddenly lose consciousness.
 - First aid should be as follows: bring a poisoned person to fresh air, unbutton clothes making breath difficult, give ammonia to smell, lay down, cover warmly, but do not let fall asleep and call a doctor.
 - When there is no breathing immediately remove victim to a warm place with a fresh air and perform CPR, while continuing it to the visit of the doctor.
 - At the same time, call a representative of gas industry to find out the causes of poisoning and eliminating them.
 - In order to prevent the fire do not put the flammable substances and flammable materials on the stove or hang near it.
 - Do not heat over on the open fire paints, varnishes, floor polishes and other household products.
 - Make sure that cord and other devices do not touch the hot parts of the gas cooker.
- WARNING!** While working stove is hot. Avoid touching the burners.
- Do not leave food being prepared unattended to prevent ignition.
 - When heating, fat, oil, sunflower oil, be careful – they can ignite when it reaches high temperatures.
 - When the fire took place do not pour water over it but cover the pot or pan by a lid to stop fire.

- Use proper utensils for cooking and heating food to prevent it from spills and splashes.
- WARNING!** Do not use cookware with a curved bottom.
- To comply with health and safety hold the plate in a pure form. The accumulation of fat and other products on the stove can cause fire.
 - Protect the plate from the influence of the elements (sun, rain, snow, etc.).
 - If you are a long time do not use the stove then cover the gas valve on the stove.
 - In identifying malfunctions boards should contact the service center and to troubleshoot not to use the stove.

The procedure for preparation and work

You should read this guide, to avoid problems in the operation of the cooking plate and to achieve the desired results of its use. The following information is required for the proper installation and maintenance instructions.

To install the board contact your dealer or an organization that has a license for this type of activity.

Installation of the gas cooker

- Board must be installed on a stable dry horizontal surface (table) in a well ventilated area.
- During operation gas stove burns oxygen, resulting in produce hazardous combustion products that go through the hood into the ventilation system.
- If you can not install the hood, install a fan on the window.
- Fan power shall be such as to provide a complete change of air in the room (3-5 times per hour).
- Ventilation windows should be opened to ensure the smooth passage of air.
- Recommended to place the ventilation window near the bottom of the plate opposite the exit of exhaust gases.
- If you can not position the ventilation openings as required by the Guidelines, it is necessary to make sure that the existing vent windows do not go to other objects.
- Do not place the plate close to the refrigerator as well as close to flammable objects, such as curtains, tablecloths, etc.
- Board must have a distance from other objects at least 2 cm on each side, 4 cm behind and 75 cm top for air circulation.

Connecting the gas hose

- The gas must be supplied in accordance with the standards.
- Type and pressure of the gas must comply which is adapted
- to the type of stove.
- To supply liquefied natural gas to the stove must be connected to a plastic tube, which is fixed to the «input» of gas stoves with the retaining clip.
- Hold the end of the gas hose for 1 minute in warm water, and then connect it to the connection of gas cookers and lock clamp (Fig. 1).
- The second end of the gas hose to connect the liquefied gas cylinder.
- That should be followed when connecting hose:
 - Hose should not touch objects with temperatures above 50 ° C;
 - The length of the hose shall not be greater than 1.25 m;
 - Hose must not bend or pinch;
 - Before installing the hoses – check for manufacturing defects.

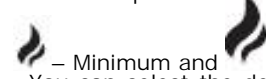
Leak test connections

- After connecting to the source of LNG sure you check all connections for leaks.
- Checking whether there is a gas leak, you need to make sure that the gas burners are closed and the inlet valve is open.
- Moist connection with soapy water.
- If there is a gas leak at the junction will be bubbles. In this case, carefully check all connections and fix the problem.

WARNING! Never test the tightness with fire.

The use of gas stoves

- Before use, carefully read the guide plate.
- The surface of the plate is covered with a protective material.
- Recommended before using it to heat the stove with the burners as the switch is turned on for 5 minutes.
- Gas stove must ignited with an electric lighter or matches.
- It can run on different positions of power - minimum,
- maximum.
- These positions are indicated on the control panel icons.



- Minimum and maximum.
- You can select the desired position by pressing and turning the burner control knob clockwise from the OFF position. («0») to mark the correct position. To turn off the stove, turn the

knob clockwise to the hour mark («0»).

The use of utensils

- To speed up the cooking, reduce the use of gas and maintain a clean plate to the correct selection and use utensils.
- On the stove, we recommend using pots and pans with a bottom diameter that exceeds the size of the flame burner (Fig. 3).
- Flame should not go beyond the bottom of the pan (should cover two thirds the bottom surface).

WARNING! Before removing the dishes from the desktop reduce the flame or turn off it.

- Recommended bottom diameter dishes for:
 - middle burner – 200-220 mm;
 - big burner – 220-260 mm.

- It is not recommended to put on the desktop deformed bars, with convex bottom cookware, as it can turn over and its contents will fill the burner.
- Utensils should be selected according to the number of products designed for cooking.
- Cooking small amounts of food in a saucepan large volume significantly increases the cost of gas.
- To reduce heat loss utensils during cooking must be covered with a lid.

WARNING! Do not place empty cookware on a burning torch.

Storage and transportation

- Before installation of the plates in the consumer, it should be kept in their original packaging in a closed room with natural ventilation.
- Transport plate is recommended in the original container in a vertical position covered by any type of transport.
- When transporting the plate must be securely fastened to prevent possible attacks and the internal displacement vehicle.

Maintenance

WARNING! Before servicing and cleaning plates, make sure all burners are turned off and a plate to cool.

- Do not use caustic, abrasive cleaning powders, wire sponges and hard tools, because they can damage the surface.
- If the liquid slopping over and spilled around the burner should immedi-

ately wipe it, because it can damage the enamel.

- Remove the top of the lattice, burner caps and burners.
- Wipe off the back cover with a cloth soaked in soapy water or use a mild cleaning agent.
- Clean and wash the burner caps and burners.
- Do not clean the back panel with wire pads because it will damage the surface.

POSSIBLE FAULTS AND TROUBLE-SHOOTING

Note: In case of a fault that can not be eliminated, respectively recommendations provided in Table 2, it is necessary to contact the service center.

Specifications

Fault, its symptoms, additional signs	Possible Causes	Methods of correction
Does not ignite the gas burner near the hole (plates)	Beat hole injectors	Clean the nozzle hole

Thermal power	3,21 kW
Gas consumption	288 g/h
Nominal pressure of gas	30 mbar
Burners	2
Type of gas	propane, butane G30(LPG)
Weight: N./W.	3,00kgs/3,50kgs
Color	White
Product dimension	485 x350 x80 mm

Set

Gas cooking plate	1
Grate desktop	1
Cover plate	1
Instruction manual / Warranty	1
Package	1

Environment friendly disposal



You can help protect the environment!
Please remember to respect the local regulations: hand in the non-working electri-

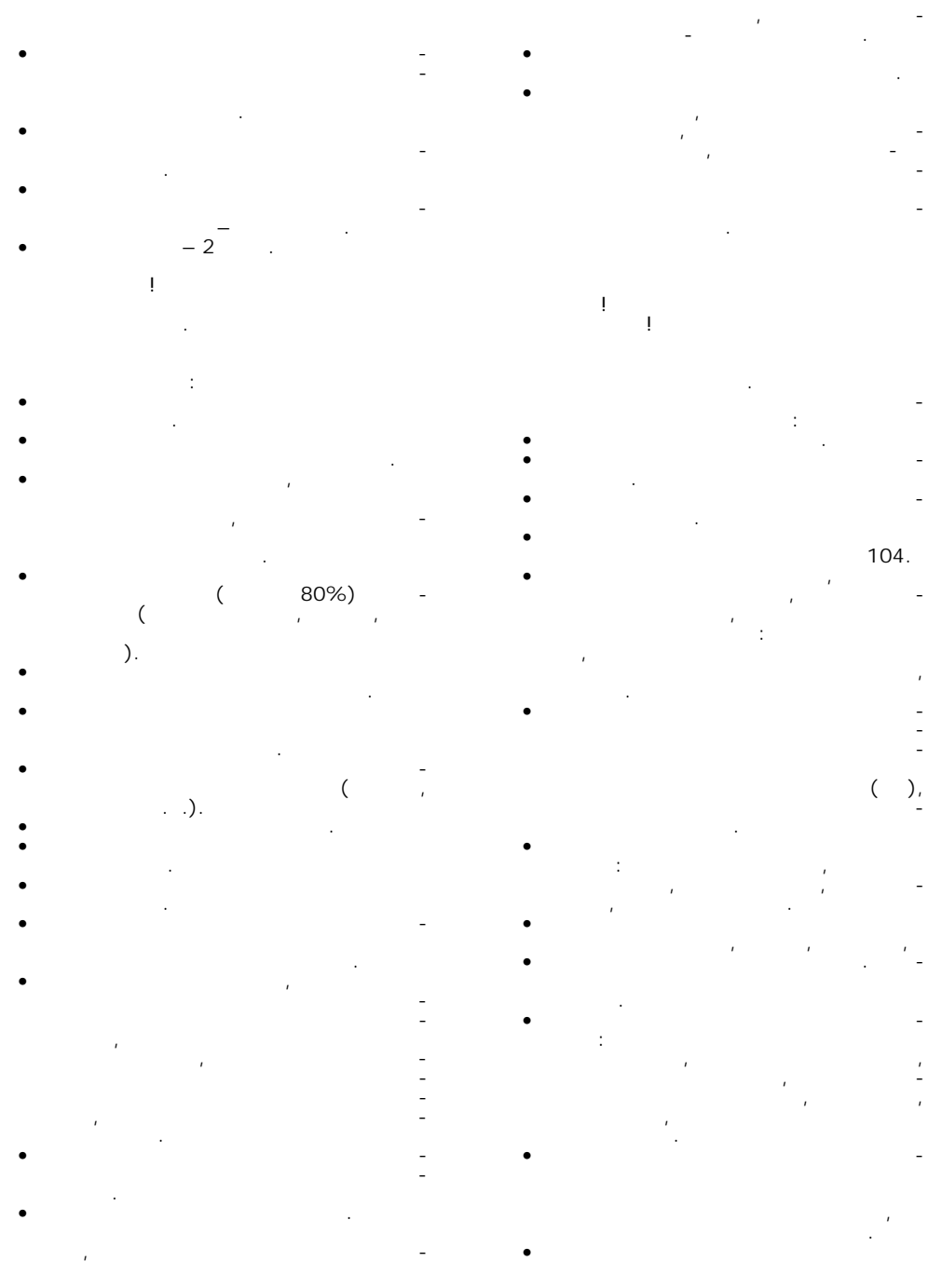
cal equipments to an appropriate waste disposal centre
The manufacturer reserves the right to change the specification and design of goods.

RU

! "Saturn".
1,5
1,5



- 1.
- 2.
- 3.
- 4.
- 5.
- 6.



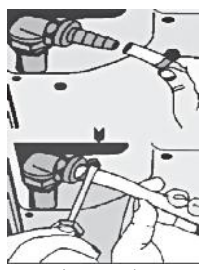
()

(3-5)

4 75 : 2

« »

1



(. 1).

50° ;
1,25 ;

5

(«0»)

(«0»).

(. 3).

2/3

().



- 200-220 ;
- 220-260

Рис. 3

	288 /
-	30
	2
	(1.)
3,0 /	3,0 /3,5
-	485x350x80

	1
	1
	1
c	1
	1



()		

	- 3,21
--	--------



"Saturn".

1,5



- 1.
- 2.
- 3.
- 4.
- 5.
- 6.

104.

(),

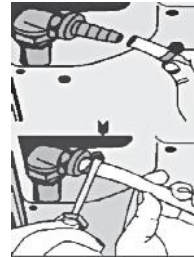
(3-5).

4 75 : 2

« »

1

(. 1).



50° ;

1,25 ;

5

(«0»)

(«0»).



Man. 2

(. 3).

2/3

()



– 200-220
– 220-260



Рис. 3

2,

	3,21
	288 /
	30
	2

	(1.)
	/ 3,0 /3,5
	485x350x80

	1
	1
	1
	1



Saturn®

INTERNATIONAL MANUFACTURER'S WARRANTY

MEZINÁRODNÍ ZÁRUKA

GB

INTERNATIONAL MANUFACTURER'S WARRANTY

The Warranty is provided for the period of 2 years or more if the Law on User Right of the country where the appliance was bought provides for a greater minimum warranty period.

All terms of warranty comply with to the Law on Protection of the Consumer Rights and are governed by the legislation of the country where the product was bought. The warranty and free of charge repair are provided in any country where the product is delivered to by Saturn Home Appliances or authorized representative thereof, and where no restriction of import or other legal provisions interfere with rendering of warranty services and free of charge repair.

Cases uncovered by the warranty and free of charge repair:

1. Guarantee coupon is filled in improperly.
2. The product has become inoperable because of the Buyer's nonobservance of the service regulations indicated in the instruction.
3. The product was used for professional, commercial or industrial purposes (except for the models, specially intended for this purpose that is indicated in the instruction).
4. The product has external mechanical damage or damage caused by penetration of the liquid inside, dust, insects and other foreign objects.
5. The product has damages caused by non-observance of the rules of power supply from batteries, mains or accumulators.
6. The product was exposed to opening, repair or modification of design by the persons, unauthorized to repair; independent cleaning of internal mechanisms etc. was made.
7. The product has natural wear of parts with limited service life, expendables etc.
8. The product has deposits of scale inside or outside of fire-bar elements, irrespective of used water quality.
9. The product has damages caused by effect of high (low) temperatures or fire on non-heat resistant parts of the product.
10. The product has damages of accessories and nozzles which are included into the complete set of product shipment (filters, grids, bags, flasks, cups, covers, knives, sealing rings, graters, disks, plates, tubes, hoses, brushes, and also power cords, headphone cords etc.).

On the warranty service and repair, please contact the authorized service centers of "Saturn Home Appliances".

MEZINÁRODNÍ ZÁRUKA

Záruka se poskytuje na dobu 2 roky. V případě že Zákon na ochranu spotřebitele dané země stanoví delší dobu, prodlužuje se záruka na tuto dobu.

Veškeré záruční podmínky odpovídají Zákonu o ochraně práv uživatelů a jsou řízené zákonodárstvím státu, kde byl výrobek koupen. Záruka a bezplatná oprava se poskytují v každém státě, kam jsou výrobky dodané společností „Saturn Home Appliances“ nebo jejím zplnomocněným zástupcem a kde nejsou žádná omezení na dovoz nebo jiné právní předpisy omezující poskytnutí záručního servisu a bezplatné opravy.

Případy, na které se záruka a bezplatná oprava nevztahují

1. Záruční list je vyplněn nesprávně.
2. Výrobek byl poškozen kvůli tomu, že zákazník nesplnil pravidla použití, která jsou uvedena v návodu.
3. Výrobek byl používán k profesionálním, komerčním nebo průmyslovým účelům (kromě modelů speciálně určených pro tyto účely, což je uvedeno v návodu).
4. Výrobek má vážnější mechanická poškození nebo poškození, vyvolaná tím, že se dovnitř dostala tekutina, prach, hmyz a jiné cizí předměty.
5. Výrobek má poškození, která jsou vyvolána nesprávným napájením od baterií, sítí nebo akumulátorů.
6. Výrobek rozebírali, opravovali nebo modifikovali jeho konstrukci lidé, kteří nebyli zplnomocněni k opravě, bylo provedeno samostatné čištění vnitřních mechanismů a pod.
7. Výrobek má přirozené opotřebování dílů s omezenou dobou použití, spotřebních materiálů atd.
8. Výrobek má vrstvu usazeniny uvnitř nebo zvenku termoelektrických ohříváků, bez ohledu na kvalitu používané vody.
9. Výrobek má poškození, která jsou vyvolána působením vysokých (nízkých) teplot nebo ohněm na termonestabilní části výrobku.
10. Výrobek má poškozené příslušenství a nástavce, které jsou dodané spolu s výrobkem (filtry, sítky, sádky, baňky, mísy, víka, nože, šlehače, struhadla, kotouče, talíře, trubky, hadice, kartáče a také síťové šňůry, sluchátkové šňůry atd.).

V otázkách záručního servisu a oprav se obraťte na autorizovanou servisní středisko společnosti „Saturn Home Appliances“.

- 2
- «Saturn Home Appliances»
- 1.
 - 2.
 - 3.
 - 4.
 - 5.
 - 6.
 - 7.
 - 8.
 - 9.
 - 10.
- «Saturn Home Appliances».

						LCD			
.4	"	8-988-993-37-78	+			+	+	+	+
18		8(8553) 32-22-11 8-960-047-22-11	+	+	+	+	+	+	+
98	«	8(86133) 6-09-84, 8-918-215-57-75	+	+	+	+	+	+	+
.108	"	8(3955) 67-00-44, 8(3955) 56-61-77	+	+	+			+	
, 109	-	8(86152)2-81-99	+	+	+	+	+	+	
.1, 12	«	8(8182) 44-15-55	+						
, 47	«	8(8512)25-19-39 8(8512) 25-12-00	+	+	+				
16, 27	«	8(8512) 54-67-67, 8(8512) 54-91-91						+	+
.15	«	8(85141) 3-61-25	+	+	+	+	+	+	+
, 32		8-927-552-47-21, 8-937-122-13-99					+	+	

.113	«	8(3852) 63-94-02	+		+	+	+	+	
.25		8-905-425-60-4-73	+	+	+				
, 37	-	8(8635) 47-47-72, 8(8635) 47-47-72	+	+	+	+	+	+	+
, 63	«	8(86155)3-11-00, 8-918-980-64-75	+	+	+	+	+	+	+
.84		8(86559) 2-08-02, 8(86559)5-29-71	+	+	+	+	+	+	+
, 58	«	8(8442) 23-41-36, 8(937) 717-93-34	+		+				
, 173	«	8(8442) 97-50-10, 8-960-883-59-00			+				
, 4		8(8442) 98-16-47, 8(8442) 53-06-04	+	+	+	+	+	+	+
-	«	8-961-688-53-48			+				
, 9		8-927-521-52-00			+			+	+
.32		8-937-722-68-12						+	+

158		8-937-730-66-03		+		+	+
		8-904-404-14-55				+	+
C 12/15	«Master»	8-928-126-63-66	+		+		
77- .65	« »	8(937) 717-93-36	+		+		
.65	« »	8(8172) 70-03-45, 8(8172) 54-21-54	+		+	+	+
.1	« »	8(8172) 52-72-51	+		+		
.46	" "	8(473) 260-09-08, 8(473) 240-57-73	+		+	+	
140/1	-	8(87951) 6-47-93, 8-928-654-28-01			+		
.48	« »	8-962-655-20-00	+	+	+	+	+
.68	« »	8(8313) 21-14-14	+		+		

.54	« »	8(8313) 20-93-00, 8(8313) 20-92-94		+			
.63	" - "	8(84235) 2-86-59, 8(84235) 9-14-64	+		+	+	+
.84	« - »	8(86132) 2-11-71, 8(86132) 3-66-02	+	+	+	+	+
.64	" - "	8(343)240-26-60	+		+		
.16	/ " - "	8(343) 201-51-41, 8(343)347-76-83	+	+	+	+	+
47	« »	8(47467) 4-12-08, 8(47467) 4-33-17	+		+		
.45/6	« - »	8(4932) 335185, 8(4932) 335236	+	+	+	+	+
.4	« - »	8(3412) 3079-79, 8(3412)30-83-07	+		+	+	+
.76	« - »	8(3412) 78-76-85, 8(3412) 78-06-64	+		+	+	+
7/1, 301, 307	« - »	8(3412) 44-60-40, 8(3412) 44-60-67		+			

« 7 « » (« »)	« 26» -	8(86545) 2-74-74		+				
	« - »	8(8362) 24-11-24, 8(8362) 25-55-40	+	+	+	+		
	« »	8(39520) 65-04-95, 8(39520) 93-16-56	+		+	+		
.24	" "	8(3952) 42-55-76, 8(3952) 78-15-83	+		+			
.38	« »	8(843) 248-71-17, 8(843) 258-85-65	+		+			
.25, .47	« - »	8 (4842) 54-82-22, 8 (4842) 54-83-33	+	+	+	+	+	+
33	-	8(3439) 39-95-20, 8(34399)34-74-40	+	+	+	+	+	+
53/2	-	8(3842) 35-39-67	+			+		
.42	« - »	8(8332) 56-25-95, 8(8332) 54-70-77	+		+	+		
, ,9	-	8-988-548-24-36	+	+	+			
	« -	8(4942) 300107,	+		+	+	+	+

5	»	8(4942) 300107						
	»	8(86142)4-43-59	+	+	+	+	+	+
	»	8(861) 267-50-88	+	+	+	+	+	+
103, .55	« - - »	8(861) 222-64-13, 8(861) 222-85-55, 8-905-408-08-38	+	+	+	+	+	+
.42/2	-	8-918-041-31-04, 8(86131) 71-2-72		+				+
.116	-	8(86164) 7-01-22		+				
.57	" - "	8(86145) 3-78-74	+	+	+	+	+	+
.25	« - »	8(86164) 65-4-95, 8-918-355-81-70	+	+			+	+
.1	-	8(86153) 4-16-70		+				
.168	" "	8(86151) 4-33-54, 8-918-464-00-86	+	+			+	+
1	« »	8(3912) 93-54-33, 8(3912) 94-52-82	+	+	+	+	+	+

36- 37-	« +»	8 (4712) 50-85-90, 8 (4712) 35-04-91	+	+	+	+	
	« »	8 (86169) 7-39-99, 8(86169) 7-24-96	+	+	+	+	+
.66	" "	8(4742) 33-45-65, 8(4742) 33-45-95	+	+	+	+	+
.29	« »	8 (8772) 52-36-90	+	+	+	+	
25	« - »	8 (8772) 55-62-38		+			+
.20	« - »	8(8722) 93-30-73	+	+	+	+	+
11	« »	8(86385) 2-33-26 8-960-458-07-11	+	+		+	+
.16, .9	« - »	8 (499) 340-29-89, 8 (499) 733-25-00		+			
1534	« - »	8(499) 717-82-07, 8(499) 717-82-12	+		+	+	+
.3 ()	« »	8(495) 721-30-70, 8(499) 168-05-19, 8(499) 168-47-15	+		+	+	+
.20 (30/05)	« »	8(8552) 359002, 8(8522) 359042	+	+	+		

24	" - "	8(8662) 42-04-30 8(8662) 42-12-21	+		+	+	
55	« - »	8(86554) 5-59-77, 8(86554) 3-67-57	+	+	+	+	+
.9 ()	« »	8(8555) 48-08-80, 8-917-906-60-06	+		+	+	+
.21	« - »	8(831) 229-63-66, 8(831) 229-60-87	+		+	+	
.18	« - »	8(831) 46-18-848		+			+
.6	« - »	8(831) 46-18-848		+			+
.18	« - »	8 (3843) 20-31-33	+		+	+	+
.14	« - »	8(8617) 63-11-15, 8(8617) 63-03-95	+	+	+	+	+
17	" - "	8(383)274-99-33, 8(383) 274-99-45	+		+		
24		8(86369) 3-74-75, 8-928-609-35-85	+	+	+		
4		8 (3532) 36-87-94	+			+	+

.16	« - »	8(3532) 77-67-64, 8(3532) 78-15-82	+	+	+	+	+
.130	" - "	8(3812)36-42-02	+		+	+	+
.2	« - +»	8(3537) 33-84-43, 8(3537) 35-13-18	+	+	+	+	+
.2	« »	8(8412) 26-09-60, 8(8412) 26-12-29	+		+	+	+
.3,	« - »	8 (342) 221-40-99	+	+	+	+	+
.11	« - »	8(8142) 78-06-93, 8(8142) 70-65-48	+		+		
.11	« - »	8 (8112)-53-86-30, 8 (8112)-53-86-50	+		+		
.12		8(793) 31-84-16	+	+	+	+	+
5-.13	" "	8(8793) 98-70-11	+	+	+	+	+
.148	-	8(47396) 48-911	+	+	+	+	+
.37	« - »	8(863) 250-47-77	+		+		

.1/52,	55	« »	8 (863) 21-92-112, 8-800-100-51-52	+	+	+	+	+
.11 /17			8-906-453-35-81	+		+		
.12		« - »	8(4855) 22-04-77, 8(4855) 25-38-60	+	+	+	+	+
.14		" "	8(86370) 2-19-50	+	+	+	+	+
.12		" - "	8(4855) 22-04-77, 8(4855) 25-38-60	+	+	+	+	+
.21		« - »	8(4855) 24-31-21	+	+	+	+	+
.1	.14,	« - »	8(4912) 76-88-01, 8(4912) 40-30-30	+	+	+	+	+
.42" "		« - »	8(4912) 41-33-02,	+	+	+	+	+
52, .8, 9			8(846) 931-85-46	+	+	+	+	
.63		" - "	8(846) 379-54-54	+	+	+	+	+
.197		« - XXI»	8(812) 600-11-97	+	+	+	+	

41,	« »	8(812) 325-36-56, 8(812) 325-36-57	+		+	+	
.11, 36	« -95»	8(812) 822-18-00, 8(812) 320-06-61	+				
.1	« - »	8(8342) 23-05-91, 8(8342) 47-48-59	+	+	+		
3-	« - »	8(8452) 35-11-80, 8(8452) 55-43-63	+	+	+	+	+
.167/1		8-951-522-38-11	+	+	+	+	+
253	« »	8(496) 547-04-95, 8(496) 549-32-79	+	+		+	+
.90	« »	8 (8622)55-51-19, 8 (8622) 55-01-08	+			+	+
.50	« »	8(8652) 74-01-91	+	+	+		
63	« »	8(8652) 24-30-14, 8(8652) 23-31-81	+	+	+	+	+
15	« »	8(8652)95-53-68, (8652)95-61-90			+		
.1	« - »	8 (4725) 24-62-27, 8 (4725) 24-73-49	+	+	+		

.158	« »	8(3473) 20-12-13, 8(3473) 20-27-70	+		+	+	+
.25	« »	8(8212) 22-95-29, 8(8212) 29-12-20	+	+	+	+	+
137	« -2000»	8(4752) 56-19-42, 8(4752) 56-19-44	+	+	+	+	+
88/15	-	8-910-834-80-35, 8-952-065-89-10	+		+		
.24/2	-	8(86130) 4-86-59, 8-918-147-02-03	+	+		+	+
.2/2	" "	8(86196) 7-20-53	+	+	+	+	+
.48	« +»	8(8482) 22-72-41, 8(8482) 22-71-85, 8(8482) 61-65-64	+	+	+	+	+
.58	« -2»	8(3822) 56-23-35, 8(3822) 48-08-80	+		+		
.137	« - »	8(4872) 31-12-57	+	+	+	+	+
.55	" "	8(3452) 47-35-69	+		+	+	+
.28	« »	8(3012) 21-89-63	+		+	+	+

18, 2	« »	8(8422) 31-00-00	+	+	+	+	+
.16/7	« - »	8(8422)73-44-22, 8(8422) 73-29-19	+	+		+	+
378	« - »	8(87875) 7-44-82	+	+	+		
.148	« - »	8(3472) 77-12-62	+		+		
.153, .42, .7	« »	8(347) 279-90-70, 8(347) 241-62-02					+
.15	" " -	8(86391) 2-18-06	+		+		
36	« - »	8(8352) 62-30-97, 8(4942) 63-20-98	+		+		
.102 ()	-	8(351) 772-72-05, 8(351) 772-73-66, 8(351) 772-69-01	+	+	+	+	+
.8 ()	-	8(351) 239-39-34, 8(351) 239-39-35	+	+	+	+	+

.18	« »	8(8202) 54-31-88	+		+	+	+
.340" "	« - »	8(8782) 27-30-60, 8(8782) 27-70-77	+	+	+	+	+
.48, .11	" ."	8(8782)25-04-66, 8(8782)25-19-15	+	+	+	+	+
.1	-	8-904-345-83-18	+	+	+	+	+
.3- .21	« - »	8 (84722) 9-52-07, 8-937-469-52-07	+	+	+	+	+
.57	« - »	8(8453) 55-80-89, 8-964-848-45-06	+		+	+	+
.12	« - »	8 (4852) 25-94-83	+		+		

2

«Saturn Home Appliances»

- 1.
- 2.
- 3.
- 4.
- 5.
- 6.
- 7.
- 8.
- 9.
- 10.

«Saturn Home Appliances».

				/	-	-
1	,36	Hi-Fi	(064) 424-89-50	+	+	+
2	.14		(065)632 21 83, 050-904-57-17	+	+	+
3	,66		062744-60- 38(39)	+	+	+
4	,49		(04563) 633-19	-	+	-
5	.50- ,82		(045) 63-68-413	+	+	+
6	,57		(041) 43-406-36	+	+	-
7	,43	" "	(0314 1) 43-432	+	+	+
8	,3, .8		(044) 332-01-67	+	+	+
9	,42		(0432) 46-50-01	+	+	-
10	,61		(0432) 61-95-73	+	+	+
11	,16		(0432) 464393; (0432) 468213	+	+	+
12	,3		(0432) 64-24- 57, (0432) 64-26-22	+	+	+
13	,1		(0432) 509-191, 579-191	+	+	+
14	,68, 1 , .420		(0562) 337-574	+	+	+
15	17 .130		(056) 778-63-25 (28)	+	+	+
16	,59		(0562) 35-04-09	+	+	+

17	, 118	-	(0562) 67-60-44	+	+	+
18	, 41	.	(056) 790-04-60	+	+	+
19	, 9	.	(068) 851-33-33	+	+	+
20	188	,	(062) 3450607 0953204451	+	+	+
21	, 129	.	(062) 349-26-81	+	+	+
22	, 1	.	(062) 3027569 (066)5082652	+	+	+
23	, 8	.	(0412) 471-568	+	+	-
24	, 4	.222	(067) 410 2198	+	+	+
25	24	,	(0412) 47-07-42, 42-11-53	+	+	-
26	, 50	.	(061) 220-97-65 (64)	+	+	+
27	, 175	.	(061) 701-65-96	+	+	+
28	, 83	.	(061)212-03-03	+	+	+
29	, 75	.	066-085-75-39	+	+	+
30	, 19	.	(0342)559-525, 750-777	+	+	+
31	, 14	.	(0342) 754737	+	+	-
32	, 9	.	096-729-4038, 067-484-9888	+	+	+
33	, 76	.	(04597) 57393	+	+	-

34	, 161	.	(04736) 629-49	+	+	+
35	1	,	(044) 591-11-90	+	+	+
36	, 1	.	(044) 4269198	+	+	-
37	, 9	.57	(044) 369-5001 (063) 486-6999	+	+	+
38	, 10	.	(06272) 2-62-23, (050) 279-68-16	+	+	+
39	, 1	.	(0522) 301-456	+	+	+
40	, 2	.	(0522) 35-79-23	+	+	+
41	, 98	.	(0522) 270-345, 349-585	+	+	+
42	, 13	.	(097) 264-21-67, 776-67-70	+	+	+
43	, 3	.	(04142) 5-05-04	+	+	+
44	, 15-106	.	(06264) 5-93-89	+	+	+
45	, 7	.	(050) 526-06-68	+	+	+
46	, 44	.1	(05366) 39-192	+	+	-
47	, 42	.	(056) 401-33-56, 404-00-80, 474-61-03	+	+	+
48	, 9	.	(056) 4092302 03	+	+	+
49	, 64/7	.	(0564) 40-07-79	+	+	+
50	, 73	.	(056) 440-07-64	+	+	+
51	, 81	.	(050) 214-91-73; (066) 017-02-03	+	+	+

52	,49	-	(0642) 505-783	+	+	+
53	, 50		(0642)50-57-83	+	+	+
54	,96	-	(0642) 494-217, 33-11-86	+	+	+
55	,1	-	(0332)290752	+	+	+
56	,15	-	(032) 244-53-44	+	+	+
57	35	" -	(032) 2973631	+	+	+
58	2	,	(032) 247-14-99	+	+	+
59	,116	" -	(032) 245-80-52	+	+	-
60	,28		(032) 239-51-52 (032) 239-55- 77,295-50-28, 295-50-29	+	+	+
61	,9	" "	032-267-63-26	+	+	-
62	242	,	(062)322-55-50	+	+	+
63	,2	-	04337- 64847;0432- 468213	+	+	+
64	,24/1		(099) 262-11-18	+	+	+
65	,46		(03131)37-337, 37-336	+	+	-
66	,50 ,32/18		(0629) 41-06-50	+	+	+
67	,227	" -	(0629) 473-000	+	+	+
68	,33,	" "	(0512) 580-555	+	+	+

69	,49	" "	0512-58-21-80	+	+	+
70	,2		(0512) 58-06-47	+	+	+
71	,62	-	(05662) 22-488, (097) 402-71-95	+	+	-
72	,97, .2	" -	(05662) 4-15-03	+	+	-
73	,38	.	(055) 497-26-17	+	+	-
74	,38	" "	(041)4152010	+	+	-
75	66 (.2)		048-7317704; 7317703;	+	+	+
76	,90		(048) 700 17 37	+	+	+
77	,55	" "	(048) 715-10- 25, (0482) 39- 06-18	+	+	+
78	,67	" "	8(05632) 6-15- 54, (05632) 6- 23-42	+	+	-
79	,26		050-013-72-17, 0532-509889	+	+	+
80	,14		(0532) 69-42-62	+	+	+
81	,21	-	(0532) 69-09-46 (093)562-81-25	+	+	+
82	66	-	(0532)615-621	+	+	+
83	,371	-	(04637)53-982 (093)753-38-28	+	+	+
84	,101/1		(046) 3738595	+	+	+
85	,12	-	(0362) 26-67- 53,26-65-85	+	+	-

86	, .26		(0692) 55-56-43, 45-36-99	+	+	+
87	,72	-	(0652)-69-07-78	+	+	+
88	17/1	" - "	(0652) 522-771	+	+	+
89	,32	-	(04733)-46-182	+	+	-
90	15 ()		(06444)40289	+	+	+
91	171 /10	-	(245) 53-136	+	+	+
92	,19		(0542) 705-296	+	+	-
93	,17	SLT- Service	(0542) 78-10-13	+	+	+
94	,2	" "	(0352) 26-30-13, 23-17-97	+	+	-
95	1/24	" "	(047) 44-46-614,(047) 44-46-134	+	+	+
96	,101		(0312) 661-297	+	+	+
97	12		(057) 717-13-39, 702-16-20	+	+	+
98	,3		(057) 734-97-24, 712-51-81	+	+	-
99	18 ()	" "	(096) 595-37-46	+	+	+
100	1		(03142) 42-258	+	+	+
101	5		(0552) 29-60-42	+	+	+
102	,28		(0552) 43-40-33	+	+	+
103	,35		(0552) 420-235	-	-	+
104	,		(0382)78-37-55,	+	+	+

	,18		78-37-73			
105	,10/1	-	(0382) 723-241, 723-240	+	+	+
106	,63		097-549-20-36	+	+	+
107	,7, .301	-	0472-633-728	+	+	+
108	,71	-	(0472) 435-389	+	+	+
109	146, .102	" - "	(0472) 563-478, 500-354, (096) 505-63-63	+	+	+
110	,.77- ,1		(0462) 601585	+	+	+
111	,6		(0462) 724872,724949	+	+	+
112	,105 ()		(0372) 55-48-69,90-13-11	+	+	+
113	,265		(0372) 58-43-01	+	+	+
114	,3	" - "	(050) 373-73-71	+	+	+
115	,5	()	(050) 324-43-01	+	+	-

GB

WARRANTY COUPON

**When purchasing the product,
please require its checking before you;**

BE SURE

**that the goods sold to you, are functional and complete
and that the warranty coupon is filled in correctly.**

This warranty coupon confirms the absence of any defects in the product you purchased and provides for free of charge repair of the product failed through the fault of the manufacturer throughout the period of warranty service and free of charge repair.

Failing the presentation of this coupon, in case of its improper filling in, infringement of factory seals (if any),and also in cases indicated in the warranty obligations, the claims are not accepted, and no warranty service and free of charge repair is made!

The warranty coupon is valid only in the original copy with the stamp of trading organization, signature of the seller, date of sale and signature of the buyer.

CZ

ZÁRUČNÍ LIST

**Při koupi výrobku
žádejte o jeho vyzkoušení ve Vaší přítomnosti,**

PŘESVĚDČE SE,

**že Vám prodaný výrobek je dobře fungující a kompletní
a že záruční list je vyplněn správně.**

Tento záruční list potvrzuje, že na Vámi koupeném výrobku nejsou žádné vady a zajišťuje bezplatnou opravu nefungujícího přístroje z viny výrobce, během celé záruční doby.

Bez předložení tohoto listu, při jeho nesprávném vyplnění, porušení plomb výrobce (jsou-li na výrobku) a také v případech, které jsou uvedené v záručním listě, nároky se nepřijímají a záruční oprava se neprovádí!

Záruční list je platný jenom jako originál s razítkem obchodní organizace, podpisem prodávajícího, termínem prodeje a podpisem zákazníka.

RU

UA

[Faint, mostly illegible text from the reverse side of the page, including fragments of the warranty coupon and other markings.]

Saturn®

WARRANTY COUPON

ZÁRU NÍ LIST

SATURN HOME APPLIANCES S.R.O. KON VOVA 141, 13083
PRAHA 3 – ŽIŽKOV, ESKÁ REPUBLIKA, TEL: + 4202/ 67 108 392

Model /

Production number/Výrobní íslo/
/

Date of sell/Termín prodeje/ / ,

Shop stamp/Razítko obchodu/ /

Seller's signature/Podpis prodava e/ /

Buyer's Signature confirming the acquaintance and consent with conditions
of free of charge maintenance service of the product, and absence of the
complaints on appearance and color of the product.

Podpis zákazníka, potvrzující seznámení a souhlas s podmínkami
bezplatného záru ního servisu výrobku, a také neexistence nárok na
vn ěšek a barvu výrobku.

Saturn® Model / Production number / Name of the Trade Company / Stamp of the Trade Company/ Client Address/Phone # / Date of Receiving/ / Defect / / Signature, Stamp / , / COUPON 1	Saturn® Model / Production number / Name of the Trade Company / Stamp of the Trade Company/ Client Address/Phone # / Date of Receiving/ / Defect / / Signature, Stamp / , / COUPON 2	Saturn® Model / Production number / Name of the Trade Company / Stamp of the Trade Company/ Client Address/Phone # / Date of Receiving/ / Defect / / Signature, Stamp / , / COUPON 3
--	--	--