

Saturn[®]

ST-BC1595

EPI LATOR

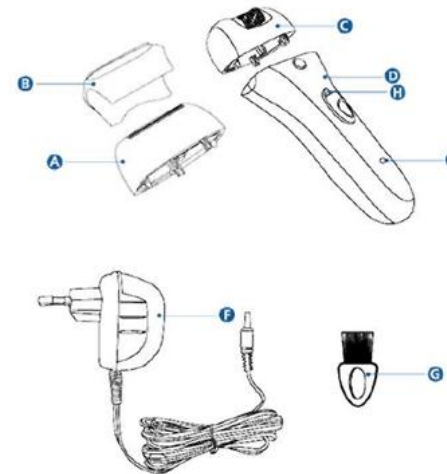
GB
EPI LATOR

Dear Buyer!
We congratulate you on having bought the device under trade name « Saturn ». We are sure that our devices will become faithful and reliable assistance in your housekeeping.

Avoid extreme temperature changes. Rapid temperature change (e.g. when the unit is moved from freezing temperature to a warm room) may cause condensation inside the unit and a malfunction when it is switched on. In this case leave the unit at room temperature for at least 1.5 hours before switching it on. If the unit has been in transit, leave it indoors for at least 1.5 hours before starting operation.



Description



- A Shaving head
- B Protective cap of shaving head
- C Epilating head
- D Appliance

- E Charging light
- F Adapter
- G Cleaning brush
- H Smart light

Important
Read this user manual carefully before you use the appliance and save it for future reference.

- Check if the voltage indicated on the adapter corresponds to the local mains voltage before you connect the appliance.
- Only use the appliance in combination with the adapter supplied.
- Do not use the appliance if the adapter or the appliance itself is damaged.
- If the adapter is damaged, contact the nearest authorized service centre for a qualified inspection and repair.
- The adapter contains a transformer. Do not cut off the adapter to replace it with another plug, as this causes a hazardous situation.
- Keep the appliance and the adapter dry.
- Keep the appliance out of the reach of children.
- Do not expose the appliance to temperatures lower than 5°C or higher than 35°C.
- To prevent damage and injuries, keep the running appliance away from your scalp hair, eyebrows, eyelashes, clothes, threads, cords, brushes etc.
- This appliance contains two Ni-Mh rechargeable batteries that may harm the environment if not disposed of properly.
- Do not use the appliance on irritated skin or skin with varicose veins, rashes, spots, moles (with hairs) or wounds without consulting your doctor first. People with a reduced immune response or people who suffer from diabetes mellitus, Reynaud's disease or immunodeficiency should contact their doctor first.
- Service life - 2 years.

Charging
You can use it without the cord when the batteries have been charged. Charge the batteries at least 8 hours before you use the appliance for cordless operating time

of up to 35 minutes. Do not charge the appliance for more than 24 hours.

1. Make sure the appliance is switched off while charging.
2. Insert the appliance plug into the bottom of the appliance and put the adapter in the wall socket. » The charging light goes on and stays on to indicate that the appliance is charging. The charging light does not go out or change colour when the appliance is fully charged.

Optimizing the lifetime of the batteries

- After you have charged the appliance for the first time, do not recharge it between epilating or shaving sessions. Continue to use it and only recharge it when the battery is (almost) empty.
- Discharge the batteries completely twice a year by letting the motor run until it stops.
- Do not keep the appliance plugged into a wall socket all the time. If the appliance has not been used for a long time, it must be recharged for 8 hours.

Using the appliance

General information about epilation

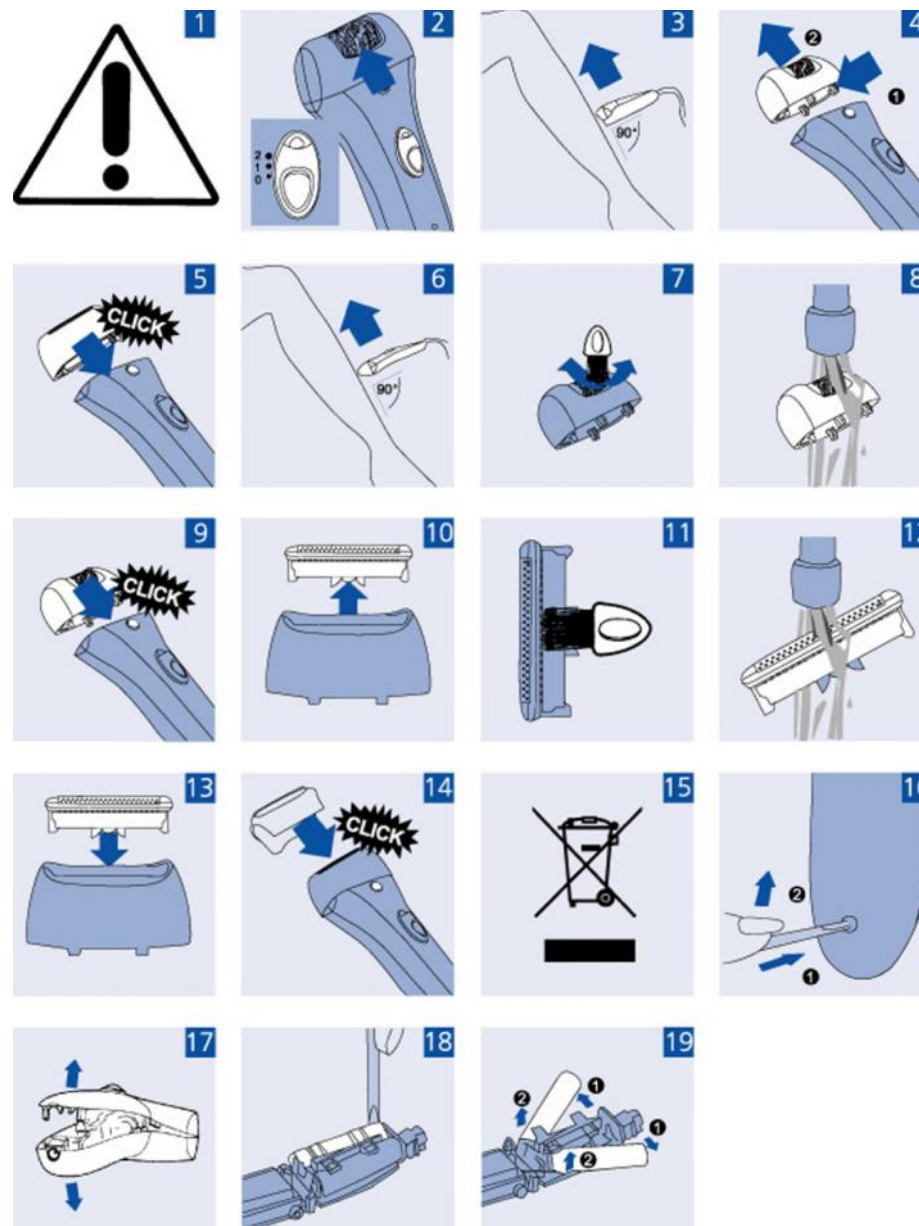
- Epilation is easier just after a bath or shower. Make sure your skin is completely dry when you start to epilate.
- When you use the appliance for the first time, we advise you to try it out on an area with only light hair growth. This helps you get accustomed to the epilation process.
- For optimal epilating results, the hairs should not be longer than 10 millimetres (Fig. 1)
- To epilate longer hairs: (Fig. 1)
 - shorten the hairs to a maximum length of 10mm with a trimmer. In this case, you can start to epilate right away.
 - shave the hairs completely. In this case you can start to epilate after a few days (the hairs must be at least 0.5mm long).
- Your skin may become a little red and irritated the first few times you use the epilator. This phenomenon is absolutely normal and quickly disappears. As you use the appliance more often, your skin gets used to epilation, skin irritation decreases and regrowth becomes thinner and softer. If the irritation has not disappeared within three days, we advise you to consult a doctor.
- We advise you to epilate before you go to bed at night, as this allows any skin irritation that may develop to diminish overnight.

Make sure your skin is clean, entirely dry and free from grease. Do not use any cream before you start to epilate.

- Select the desired speed to switch on the appliance (Fig. 2). Select speed I for areas with little hair growth and for areas where bones are located directly beneath the skin, such as knees and ankles. Select speed II for larger areas with stronger hair growth.
- Stretch your skin with your free hand to make the hairs stand upright.
- Place the appliance perpendicularly onto the skin. Move the appliance against the direction of hair growth at a moderate speed. (Fig. 3)
- Make sure the epilating discs proper contact with the skin.
- Press the appliance lightly onto the skin.
- If you are not completely satisfied with the epilation result, try moving the epilator more slowly over your skin.

Shaving

- You can use the shaving head to shave sensitive body parts, such as your underarms and bikini line. With the shaving head, you obtain a smooth result in a comfortable and gentle way.
1. Make sure the appliance is switched off.
 2. Remove the epilating head (Fig. 4). Press the release button (1) and move the epilating head in the direction of the arrow (2).
 3. Place the shaving head on the appliance and press it onto the appliance until it snaps home ('click') (Fig. 5).
 4. Switch on the appliance by selecting speed II.
 5. Place the shaving head onto your skin and move the appliance slowly and smoothly against the direction of hair growth. Press the appliance lightly (Fig. 6).



Cleaning and maintenance

Never rinse the adapter or the appliance itself with water.

Do not use any corrosive detergents, scouring pads or cloths, petrol, acetone etc. to clean the appliance.

1. Make sure the appliance is switched off and unplugged.
2. Clean the appliance with the brush supplied or with a moist cloth after each use.

Cleaning the epilating head

Clean the epilating head after every use.

1. Make sure the appliance is switched off and unplugged.
2. Remove the epilating head (Fig. 4). Press the release button (1) and move the epilating head in the direction of the arrow (2).
3. Clean all accessible parts, including the bottom of the epilating head and the epilating discs, with the brush (Fig. 7).
4. You can also rinse the epilating head (not the appliance!) under the tap to clean it more thoroughly (Fig. 8). Never try to detach the epilating discs from the epilating head.
5. Place the epilating head on the appliance and press it until it snaps home ('click') (Fig. 9). The epilating head only fits onto the appliance in one way.

Cleaning the shaving head

Clean the shaving head after every use.

1. Make sure the appliance is switched off and unplugged.
2. Remove the shaving head.
3. Pull the cutter unit out of the shaving head. (Fig. 10)
4. Brush the hairs off the cutter unit and the shaving head. Make sure that you also brush away any hairs that have collected under the trimmers (Fig. 11).
5. You can also rinse the cutter unit and the rest of the shaving head (not the appliance!) under the tap (Fig. 12).
6. Put the cutter unit back into the shaving head and snap the shaving head back onto the appliance ('click') (Fig. 13). Do not exert pressure on the shaving foil to avoid damage.
7. Rub a drop of sewing machine oil onto the trimmers and shaving foil of the shaving unit twice a year.

Storage

Put the protective cap on the shaving head ('click'). (Fig. 14) Store the appliance and the accessories in the pouch.

Replacement

If you use the shaving head several times a week, replace the cutter unit after one or two years of use or if it is damaged.

Environment

Do not throw away the appliance with the normal household waste at the end of its life, but hand it in at an official collection point for recycling. By doing this, you help to preserve the environment (Fig. 15). The built-in rechargeable batteries contain substances that may pollute the environment. Always remove the batteries before you discard and hand in the appliance at an official collection point. Dispose of the batteries at an official collection point for batteries.

- Remove the adapter from the wall socket and let the appliance run until the batteries are empty.
 - Remove the epilating head (Fig. 4).
 - Hold the appliance in your hand and open it with a screwdriver (Fig. 16).
 - Pull the two housings halves apart with your thumbs until the snap connections break (Fig. 17).
 - Remove all components (motor unit and the printed circuit board unit) from the housing halves.
 - Insert a screwdriver between the plastic battery holder and the batteries (Fig. 18).
 - Remove the batteries from the plastic battery holder and the printed circuit board (Fig. 19).
- Do not try to reassemble the appliance in order to run it from the mains. This is dangerous (Fig. 1).

Troubleshooting

Reduced epilating performance	-You moved the epilator in the wrong direction. -You placed the epilating head on the skin at the wrong angle. -You moistened your skin with water or a cream or other skincare product prior to	-Move the appliance against the direction of hair growth. - Make sure you place the appliance perpendiculary onto the skin. - Make sure your skin is entirely dry and free from grease. Do not put any cream, body milk or other skincare
-------------------------------	--	---

	epilation.	product on your skin before you start to epilate.		-You did not move the epilating head in the right direction.	-Press the release button and move the epilating head in the direction of the arrow (fig. 14) to remove it
The appliance does not work	-Appliance have been moved too fast over the skin. - The batteries are empty. - The socket to which the appliance is connected is not live.	- Move the appliance at moderate speed over the skin. - Charge the batteries. - Make sure the socket you use is live.		-You did move the shaving head in the right direction.	-Press the release button and move the shaving head in the direction of the arrow (fig. 14) to remove it.
Reduced shaving performance	- The appliance is not switched on. - You did not attach the epilating head correctly.	- Switch on the appliance. - Place the epilating head on the appliance and press it onto the appliance until it snaps home ('click').		-The shaving head is dirty. - The cutter unit is damaged or worn.	- Switch off the appliance, unplug it and remove the shaving head. Then clean the cutter unit and the shaving head with the cleaning brush supplied. Remove any hairs that are stuck under the trimmers. - Replace the cutter unit.
Stronger skin irritation than usual after shaving				The cutter unit is damaged or worn.	Replace the cutter unit.
Skinn irritation occurs	- You used epilator for the first time or after a long period of - You have applied too much pressure to the appliance	- Some skin irritation may occur the first few times you use the appliance. This is absolutely normal and usually disappears quickly. Also make sure you keep the epilating head clean. - Do not use any pressure when moving the appliance over skin.			

Specifications

Power:	4 W
Rated Voltage:	220-230 V
Rated Frequency:	50 Hz
Rated Current:	0.02 A
Set	
EPILATOR	1
INSTRUCTION MANUAL WITH WARRANTY BOOK	1
PACKAGE	1

Environment friendly disposal
You can help protect the environment!



Please remember to respect the local regulations: hand in the non-working electrical equipment to an appropriate waste disposal center.

The manufacturer reserves the right to change the specification and design of goods.

B
C
D
F
G
Smart light

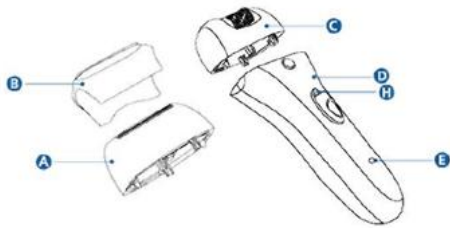
RU

! "Saturn".

()

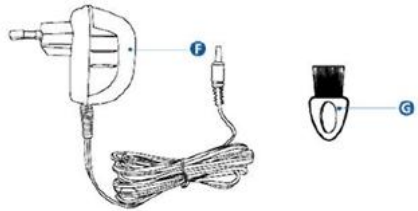
1,5

1,5



5°C 35°C.

2

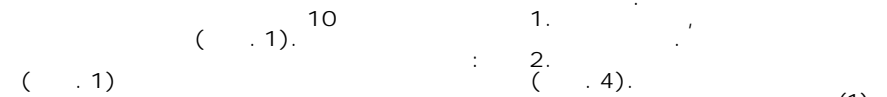
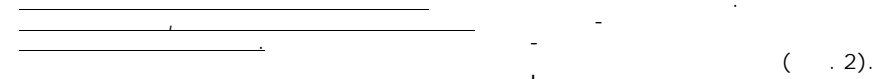


(),

- 2

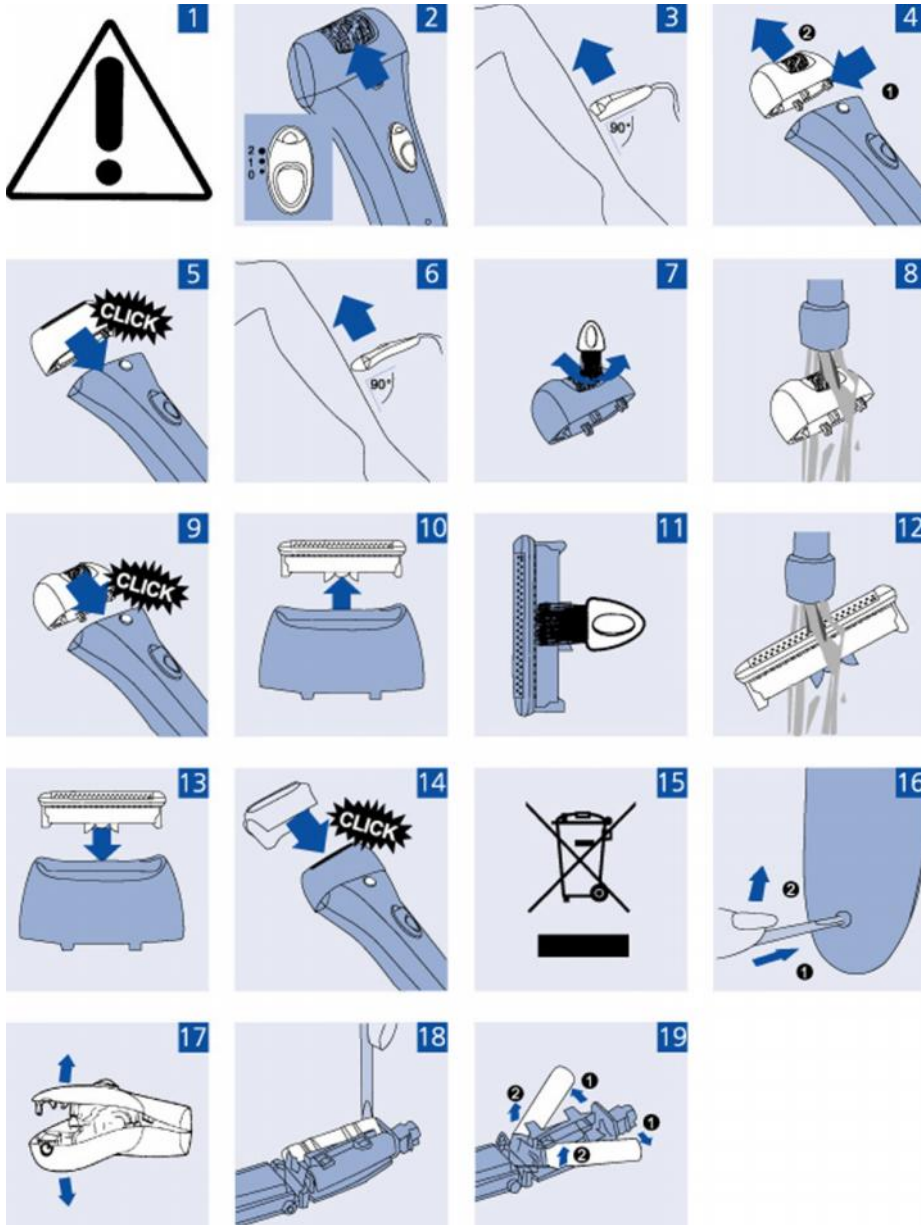
A

8



9

(. 6).



14).

1.

2.

1.

2.

(1) (. 4).

(2).

3.

4.

(. 7).

!)

(. 8).

5.

(. 9).

1.

2.

3.

10).

5.

6.

7.

(. 11).

(. 12).

(. 13).

() (.

(. 15).

(. 16).

(. 17).

(. 18).

(. 19).

! (. 1)

					(. 14),
					(. 14),

--	--	--

4
220-230
50
0.02

1
C
1
1

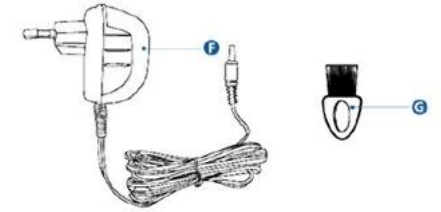
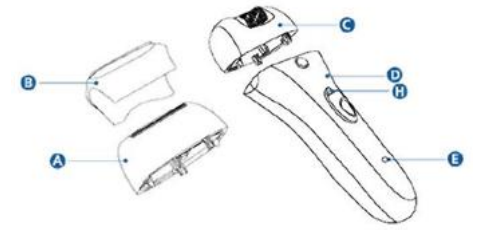


UA

!
"Saturn".

1,5

1,5



A
B
C
D
F
G
Smart light

35 ° C.

5 ° C

10 (. 1).

2 (. 1) 10

(.),

(. 0,5).

35

8

24

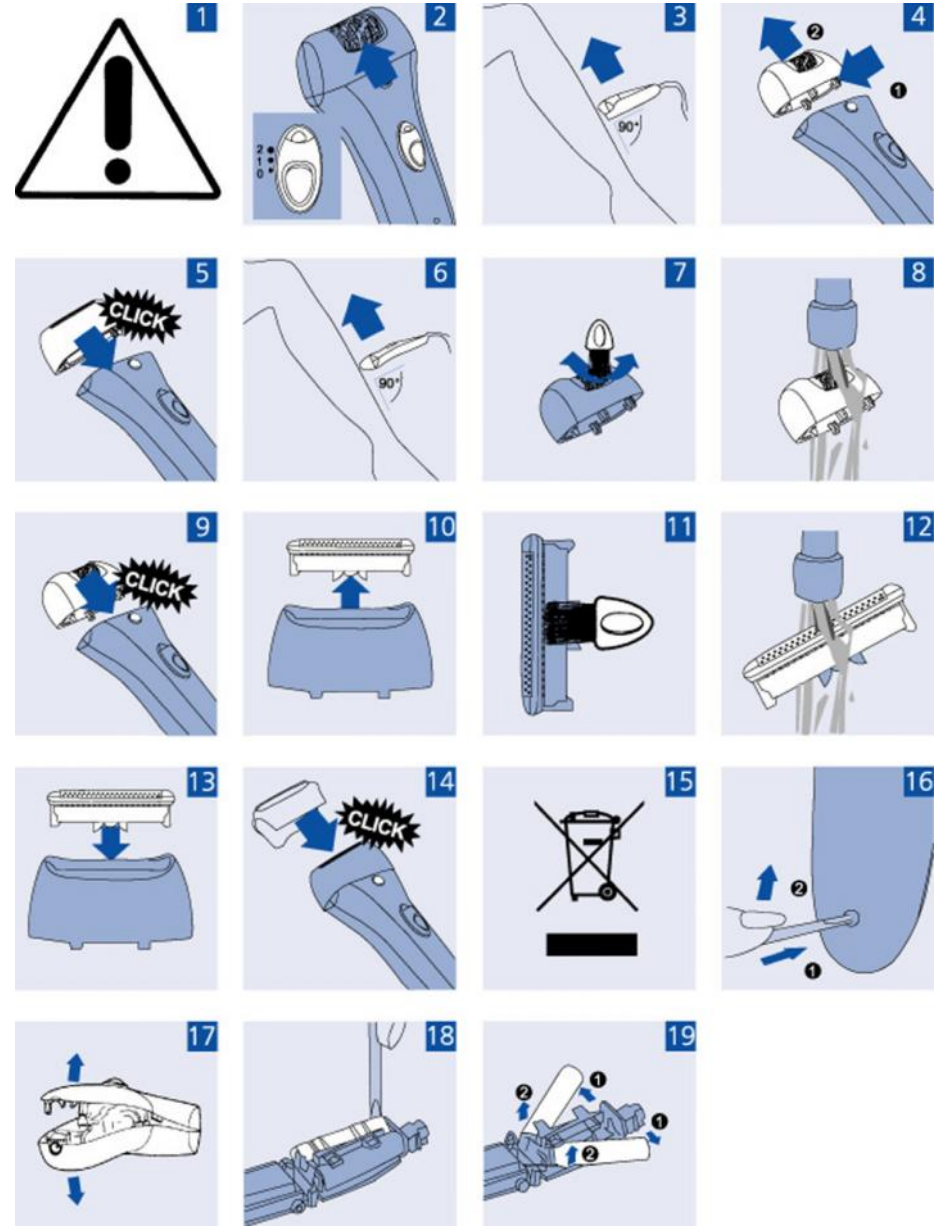
1.
2.

(. 2).

II

(. 3).

8



- 1.
 2. (1) (. 4).
 3. (2).
 4. (. 5).
 5. II.
- (. 6).

- 1.
 - 2.
-

- 1.
 2. (1) (. 4).
 3. (2).
 4. (. 7).
 5. (!) (. 8).
- (. 9).

- 1.
- 2.
3. (. 10).
- 4.
5. (. 11).
6. (. 12).
7. (. 13).
14. () (.

- 1.
- 2.
3. (. 15).

- 1.
2. (. 4).
3. (.
4. (. 16).
5. (. 17).
6. (.
7. (.
8. (.
9. (. 18).
10. (. 19).
11. (!) (.

	-	-		-	-
	-	-		-	-
	-	-		-	-
	-	-		-	-
	-	-		-	(. 14),
	-	-		-	(. 14),
	-	-		-	-

Saturn®

INTERNATIONAL MANUFACTURER'S WARRANTY

,

MEZINÁRODNÍ ZÁRUKA

• : 4
• : 220-230
• : 50
• : 0.02

1

1

1



INTERNATIONAL MANUFACTURER'S WARRANTY

The Warranty is provided for the period of 2 years or more if the Law on User Right of the country where the appliance was bought provides for a greater minimum warranty period.

All terms of warranty comply with to the Law on Protection of the Consumer Rights and are governed by the legislation of the country where the product was bought. The warranty and free of charge repair are provided in any country where the product is delivered to by Saturn Home Appliances or authorized representative thereof, and where no restriction of import or other legal provisions interfere with rendering of warranty services and free of charge repair.

Cases uncovered by the warranty and free of charge repair:

1. Guarantee coupon is filled in improperly.
2. The product has become inoperable because of the Buyer's nonobservance of the service regulations indicated in the instruction.
3. The product was used for professional, commercial or industrial purposes (except for the models, specially intended for this purpose that is indicated in the instruction).
4. The product has external mechanical damage or damage caused by penetration of the liquid inside, dust, insects and other foreign objects.
5. The product has damages caused by non-observance of the rules of power supply from batteries, mains or accumulators.
6. The product was exposed to opening, repair or modification of design by the persons, unauthorized to repair; independent cleaning of internal mechanisms etc. was made.
7. The product has natural wear of parts with limited service life, expendables etc.
8. The product has deposits of scale inside or outside of fire-bar elements, irrespective of used water quality.
9. The product has damages caused by effect of high (low) temperatures or fire on non-heat resistant parts of the product.
10. The product has damages of accessories and nozzles which are included into the complete set of product shipment (filters, grids, bags, flasks, cups, covers, knives, sealing rings, graters, disks, plates, tubes, hoses, brushes, and also power cords, headphone cords etc.).

On the warranty service and repair, please contact the authorized service centers of "Saturn Home Appliances".

MEZINÁRODNÍ ZÁRUKA

Záruka se poskytuje na dobu 2 roky. V případě že Zákon na ochranu spotřebitele dané země stanoví delší dobu, prodlužuje se záruka na tuto dobu.

Veškeré záruční podmínky odpovídají Zákonu o ochraně práv uživatelů a jsou řízené zákonodárstvím státu, kde byl výrobek koupen. Záruka a bezplatná oprava se poskytují v každém státě, kam jsou výrobky dodané společností „Saturn Home Appliances“ nebo jejím zplnomocněným zástupcem a kde nejsou žádná omezení na dovoz nebo jiné právní předpisy omezující poskytnutí záručního servisu a bezplatné opravy.

Případy, na které se záruka a bezplatná oprava nevztahují

1. Záruční list je vyplněn nesprávně.
2. Výrobek byl poškozen kvůli tomu, že zákazník nesplnil pravidla použití, která jsou uvedena v návodu.
3. Výrobek byl používán k profesionálním, komerčním nebo průmyslovým účelům (kromě modelů speciálně určených pro tyto účely, což je uvedeno v návodu).
4. Výrobek má větší mechanická poškození nebo poškození, vyvolaná tím, že se dovnitř dostala tekutina, prach, hmyz a jiné cizí předměty.
5. Výrobek má poškození, která jsou vyvolaná nesplněním pravidel napájení od baterií, sítí nebo akumulátorů.
6. Výrobek rozebírali, opravovali nebo měnili jeho konstrukci lidé, kteří nebyli zplnomocněni k opravě, bylo provedeno samostatné ústřední vnitřní mechanisma a pod.
7. Výrobek má přirozené opotřebení dílů s omezenou dobou použití, spotřebních materiálů atd.
8. Výrobek má vrstvu usazeniny uvnitř nebo zvenku termoelektrických ohřevů, bez ohledu na kvalitu používané vody.
9. Výrobek má poškození, která jsou vyvolána působením vysokých (nízkých) teplot nebo ohněm na termonestabilní části výrobku.
10. Výrobek má poškození přístrojů a nástavce, které jsou dodané spolu s výrobkem (filtry, síky, sádky, baňky, mísy, víka, nože, šlehače, struhadla, kotouče, talíře, trubky, hadice, kartáče a také síťové šňůry, sluchátkové šňůry atd.).

V otázkách záručního servisu a oprav se obraťte na autorizovanou servisní střediska společnosti „Saturn Home Appliances“.

«Saturn Home Appliances»

- 1.
- 2.
- 3.
- 4.
- 5.
- 6.
- 7.
- 8.
- 9.
- 10.

«Saturn Home Appliances».

					LCD		
.4	" "	8-988-993-37-78	+		+	+	+
18		8(8553) 32-22-11 8-960-047-22-11	+	+	+	+	+
98	« - »	8(86133) 6-09-84, 8-918-215-57-75	+	+	+	+	+
48, .108	" - "	8(3955) 67-00-44, 8(3955) 56-61-77	+	+	+		+
, .109	-	8(86152)2-81-99	+	+	+	+	+
.1, .1, 12	« -29»	8(8182) 44-15-55	+				
, .47	« »	8(8512)25-19-39 8(8512) 25-12-00	+	+	+		
16, 2 .7	« »	8(8512) 54-67-67, 8(8512) 54-91-91				+	+
.15	« »	8(85141) 3-61-25	+	+	+	+	+
32		8-927-552-47-21, 8-937-122-13-99				+	+
.113	« »	8(3852) 63-94-02	+		+	+	+
.25		8-905-425-60-4-73	+	+	+		

...	-	8(8635) 47-47-72, 8(8635) 47-47-72	+	+	+	+	+
...	«	8(86155)3-11-00, 8-918-980-64-75	+	+	+	+	+
...	»	8(86559) 2-08-02, 8(86559)5-29-71	+	+	+	+	+
...	«	8(8442) 23-41-36, 8(937) 717-93-34	+		+		
...	»	8(8442) 97-50-10, 8-960-883-59-00			+		
...	»	8(8442) 98-16-47, 8(8442) 53-06-04	+	+	+	+	+
...	«	8-961-688-53-48			+		
...	»	8-927-521-52-00			+	+	+
...	»	8-937-722-68-12				+	+
...	»	8-937-730-66-03			+	+	+
158		8-904-404-14-55				+	+
...	«Master»	8-928-126-63-66	+			+	
C 12/15	«	8(937) 717-93-36				+	

...							
...	«	8(8172) 70-03-45, 8(8172) 54-21-54	+			+	+
...	»	8(8172) 52-72-51	+			+	
...	" "	8(473) 260-09-08, 8(473) 240-57-73	+			+	+
140/1	-	8(87951) 6-47-93, 8-928-654-28-01				+	
...	«	8-962-655-20-00	+			+	+
...	»	8(8313) 21-14-14	+			+	
...	«	8(8313) 20-93-00, 8(8313) 20-92-94				+	
...	" "	8(84235) 2-86-59, 8(84235) 9-14-64	+			+	+
...	«	8(86132) 2-11-71, 8(86132) 3-66-02	+			+	+
...	" "	8(343)240-26-60	+			+	
...	/	8(343) 201-51-41, 8(343)347-76-83	+			+	+
...	«	8(47467) 4-12-08, 8(47467) 4-33-17	+			+	

.45/6	« - »	8(4932) 335185, 8(4932) 335236	+	+	+	+	+
.4	« - »	8(3412) 3079-79, 8(3412)30-83-07	+		+	+	+
.76	« - »	8(3412) 78-76-85, 8(3412) 78-06-64	+		+	+	+
7/1, 301, 307	« - »	8(3412) 44-60-40, 8(3412) 44-60-67		+			
7 (« »)	« 26»	8(86545) 2-74-74		+			
.24	« »	8(8362) 24-11-24, 8(8362) 25-55-40	+	+	+	+	
.20	« »	8(39520) 65-04-95, 8(39520) 93-16-56	+		+	+	
.24	" "	8(3952) 42-55-76, 8(3952) 78-15-83	+		+		
.38	« »	8(843) 248-71-17, 8(843) 258-85-65	+		+		
.25, .47	« »	8 (4842) 54-82-22, 8 (4842) 54-83-33	+	+	+	+	+
33	-	8(3439) 39-95-20, 8(34399)34-74-40	+	+	+	+	+
53/2	-	8(3842) 35-39-67	+			+	

.42	« - »	8(8332) 56-25-95, 8(8332) 54-70-77	+		+	+	
.9	-	8-988-548-24-36	+	+	+		
5	« »	8(4942) 300107, 8(4942) 300107	+		+	+	+
.2,		8(86142)4-43-59	+	+	+	+	+
3	-	8(861) 267-50-88	+	+	+	+	+
103, .55	« - »	8(861) 222-64-13, 8(861) 222-85-55, 8-905-408-08-38	+	+	+	+	+
.42/2		8-918-041-31-04, 8(86131) 71-2-72		+			+
116		8(86164) 7-01-22		+			
57	" "	8(86145) 3-78-74	+	+	+	+	+
.25	« »	8(86164) 65-4-95, 8-918-355-81-70	+	+		+	+

1		8(86153) 4-16-70		+			
.168	" "	8(86151) 4-33-54, 8-918-464-00-86	+	+		+	+
1	« »	8(3912) 93-54-33, 8(3912) 94-52-82	+	+	+	+	+
36- , .37-	« +»	8 (4712) 50-85-90, 8 (4712) 35-04-91	+	+	+	+	
2	« »	8 (86169) 7-39-99, 8(86169) 7-24-96	+	+	+	+	+
.66	" "	8(4742) 33-45-65, 8(4742) 33-45-95	+	+	+	+	+
.29	« »	8 (8772) 52-36-90	+	+	+	+	
25	« - »	8 (8772) 55-62-38		+			+
.20	« »	8(8722) 93-30-73	+	+	+	+	+
11	« »	8(86385) 2-33-26 8-960-458-07-11	+	+		+	+
.16, .9	« »	8 (499) 340-29-89, 8 (499) 733-25-00		+			
1534	« - »	8(499) 717-82-07, 8(499) 717-82-12	+		+	+	+

.3 (. .)	« »	8(495) 721-30-70, 8(499) 168-05-19, 8(499) 168-47-15	+		+	+	+
(30/05)	« »	8(8552) 359002, 8(8522) 359042	+	+	+		
24	" "	8(8662) 42-04-30 8(8662) 42-12-21	+		+	+	
55	« »	8(86554) 5-59-77, 8(86554) 3-67-57	+	+	+	+	+
.9 (. « »)	« »	8(8555) 48-08-80, 8-917-906-60-06	+		+	+	+
.21	« »	8(831) 229-63-66, 8(831) 229-60-87	+		+	+	
.18	« - »	8(831) 46-18-848		+			+
.6	« - »	8(831) 46-18-848		+			+
.18	« »	8 (3843) 20-31-33	+		+	+	+
.14	« - »	8(8617) 63-11-15, 8(8617) 63-03-95	+	+	+	+	+
17	" "	8(383)274-99-33, 8(383) 274-99-45	+		+		
24		8(86369) 3-74-75, 8-928-609-35-85	+	+	+		
.4	. .	8 (3532) 36-87-94					

.16	« - »	8(3532) 77-67-64 , 8(3532) 78-15-82	+	+	+	+	+
.130	" "	8(3812)36-42-02	+		+	+	+
.2	« - +»	8(3537) 33-84-43, 8(3537) 35-13-18	+	+	+	+	+
.2	« »	8(8412) 26-09-60, 8(8412) 26-12-29	+		+	+	+
.3,	« - »	8 (342) 221-40-99	+	+	+	+	+
.11	« - »	8(8142) 78-06-93, 8(8142) 70-65-48	+		+		
.11	« »	8 (8112)-53-86-30, 8 (8112)-53-86-50	+		+		
.12		8(793) 31-84-16	+	+	+	+	+
5-.13	" "	8(8793) 98-70-11	+	+	+	+	+
.148		8(47396) 48-911	+	+	+	+	+
.37	« - »	8(863) 250-47-77	+		+		
.50-1/52, 55	« »	8 (863) 21-92-112, 8-800-100-51-52	+	+	+	+	+

.11 /17		8-906-453-35-81	+		+		
.12	« »	8(4855) 22-04-77, 8(4855) 25-38-60	+	+	+	+	+
.14	" "	8(86370) 2-19-50	+	+	+	+	+
.12	" "	8(4855) 22-04-77, 8(4855) 25-38-60	+	+	+	+	+
21	« »	8(4855) 24-31-21	+	+	+	+	+
.14,	« - »	8(4912) 76-88-01, 8(4912) 40-30-30	+	+	+	+	+
.42" "	« - »	8(4912) 41-33-02,	+	+	+	+	+
52, .8, 9		8(846) 931-85-46	+	+	+	+	+
63	" - "	8(846) 379-54-54	+	+	+	+	+
.197	« - XXI»	8(812) 600-11-97	+	+	+	+	
.41,	« - »	8(812) 325-36-56, 8(812) 325-36-57	+		+	+	
.11, 36 ,	« -95»	8(812) 822-18-00, 8(812) 320-06-61	+				

1	« - »	8(8342) 23-05-91, 8(8342) 47-48-59	+	+	+		
3-	« - »	8(8452) 35-11-80, 8(8452) 55-43-63	+	+	+	+	+
.167/1		8-951-522-38-11	+	+	+	+	+
.253	« »	8(496) 547-04-95, 8(496) 549-32-79	+	+		+	+
.90	« »	8 (8622)55-51-19, 8 (8622) 55-01-08	+			+	+
.50	« »	8(8652) 74-01-91	+	+	+		
.8/1							
63	« »	8(8652) 24-30-14, 8(8652) 23-31-81	+	+	+	+	+
15	« »	8(8652)95-53-68, (8652)95-61-90					
.21				+			
	« - »	8 (4725) 24-62-27, 8 (4725) 24-73-49	+	+	+		
.1							
	« - »	8(3473) 20-12-13, 8(3473) 20-27-70	+			+	+
.158							
	« »	8(8212) 22-95-29, 8(8212) 29-12-20	+	+	+	+	+
.25							
137	« -2000»	8(4752) 56-19-42, 8(4752) 56-19-44	+	+	+	+	+

88/15	-	8-910-834-80-35, 8-952-065-89-10	+			+	
.24/2		8(86130) 4-86-59, 8-918-147-02-03	+	+			+
.2/2	" - "	8(86196) 7-20-53	+	+	+	+	+
.48	« +»	8(8482) 22-72-41, 8(8482) 22-71-85, 8(8482) 61-65-64	+	+	+	+	+
.58	« -2»	8(3822) 56-23-35, 8(3822) 48-08-80	+			+	
.137	« - »	8(4872) 31-12-57	+	+	+	+	+
.55	" "	8(3452) 47-35-69	+			+	+
.28	« »	8(3012) 21-89-63	+			+	+
.18, 18, 2	« »	8(8422) 31-00-00	+	+	+	+	+
.16/7	« »	8(8422)73-44-22, 8(8422) 73-29-19	+	+			+
.378	« - »	8(87875) 7-44-82	+	+	+		
.148	« - »	8(3472) 77-12-62	+			+	
153, .42, 7	« »	8(347) 279-90-70, 8(347) 241-62-02					+

15	" "	8(86391) 2-18-06	+		+			
36	« »	8(8352) 62-30-97, 8(4942) 63-20-98	+		+			
.102 ()	-	8(351) 772-72-05, 8(351) 772-73-66, 8(351) 772-69-01	+	+	+	+	+	+
. . 8 ()	-	8(351) 239-39-34, 8(351) 239-39-35	+	+	+	+	+	+
. . 18	« »	8(8202) 54-31-88	+		+	+	+	+
. 340" "	« - »	8(8782) 27-30-60, 8(8782) 27-70-77	+	+	+	+	+	+
. . 48, . 11	" . ."	8(8782)25-04-66, 8(8782)25-19-15	+	+	+	+	+	+
. 1		8-904-345-83-18	+	+	+	+	+	+
. 3- . 21	« »	8 (84722) 9-52-07, 8-937-469-52-07	+	+	+	+	+	+
. 57	« - »	8(8453) 55-80-89, 8-964-848-45-06	+		+	+	+	+
. . 12	« - »	8 (4852) 25-94-83	+		+			

UA

- 2
- «Saturn Home Appliances»
- 1.
- 2.
- 3.
- 4.
- 5.
- 6.
- 7.
- 8.
- 9.
- 10.

«Saturn Home Appliances».

				/	-	-	
					-	-	

1	,36	Hi-Fi ()	(064) 424-89-50	+	+	+
2	,49	-	(04563) 633-19	-	+	-
3	.50- ,82	-	(045) 63-68-413	+	+	+
4	,57		(041) 43-406-36	+	+	-
5	,43	" "	(0314 1) 43-432	+	+	+
6	,3, .8	-	(044) 332-01-67	+	+	+
7	,42	(-)	(0432) 46-50-01	+	+	-
8	,61		(0432) 61-95-73	+	+	+
9	,16	()	(0432) 464393; (0432) 468213	+	+	+
10	,3		(0432) 64-24- 57, (0432) 64-26-22	+	+	+
11	,1		(0432) 509-191, 579-191	+	+	+
12	,68, 1, .420		(0562) 337-574	+	+	+
13	,17 .130	-	(056) 778-63-25 (28)	+	+	+
14	,59		(0562) 35-04-09	+	+	+
15	,118		(0562) 67-60-44	+	+	+
16	,41		(056) 790-04-60	+	+	+
17	,9		(068) 851-33-33	+	+	+

18	, - 188	()	(062) 345-06-07	+	+	+
19	,129	-	(062) 349-26-81	+	+	+
20	,1	()	(062) 302-75-69	+	+	+
21	,8	" "	(0412) 471-568	+	+	-
22	,24	C ()	(0412) 47-07- 42, 42-11-53	+	+	-
23	,50	-	(061) 220-97-65 (64)	+	+	+
24	,175		(061) 701-65-96	+	+	+
25	,83	-	(061)212-03-03	+	+	+
26	19		(0342)559-525, 750-777	+	+	+
27	,223		(0342) 75-60-40	+	+	+
28	,9	-	(048) 734-71-90	+	+	+
29	,76		(04597) 551-62	+	+	-
30	,161, ()	-	(04736) 629-49	+	+	+
31	1	-	(044) 591-11-90	+	+	+
32	,1	" "	(044) 4269198	+	+	-
33	,9 .57	-	(044) 369-5001 (063) 486-6999	+	+	+
34	,10	()	(06272) 2-62- 23, (050) 279-68-16	+	+	+

35	' ,1	" "	(0522) 301-456	+	+	+
36	' ,2		(0522) 35-79-23	+	+	+
37	' ,98	()	(0522) 270-345,349-585	+	+	+
38	' ,13		(097) 264-21-67, 776-67-70	+	+	+
39	' ,11	" "	(05447) 61-356	+	+	+
40	' ,3	" "	(04142) 5-05-04	+	+	+
41	' ,15-106		(06264) 5-93-89	+	+	+
42	' ,7		(050) 526-06-68	+	+	+
43	' ,44, .1	()	(05366) 39-192	+	+	-
44	' ,55		(0536) 74-72-10, 74-71-81	+	+	+
45	' ,42		(056) 401-33-56, 404-00-80, 474-61-03	+	+	+
46	' ,64/7		(0564) 40-07-79	+	+	+
47	' ,73	" "	(056) 440-07-64	+	+	+
48	' ,81		(050) 214-91-73; (066) 017-02-03	+	+	+
49	' ,49	-	(0642) 505-783	+	+	+
50	' ,96		(0642) 494-217, 33-11-86	+	+	+
51	' ,3	()	(0332) 78-05-91	+	+	+
52	' ,15		(032) 244-53-44	+	+	+

53	' ,35	" "	(032) 2973631	+	+	+
54	' ,109		(032) 247-14-99	+	+	+
55	' ,2		(032) 247-14-99	+	+	+
56	' ,116	" - "	(032) 245-80-52	+	+	-
57	' ,28		(032) 239-51-52 (032) 239-55-77,295-50-28, 295-50-29	+	+	+
58	' ,9	" "	032-267-63-26	+	+	-
59	' ,2	(-)	04337-64847;0432-468213	+	+	+
60	' ,46		(03131)37-337, 37-336	+	+	-
61	' ,50, 32/18		(0629) 41-06-50	+	+	+
62	' ,227	" - " ()	(0629) 473-000	+	+	+
63	' ,33,	" " ()	(0512) 580-555	+	+	+
64	' ,2		(0512) 58-06-47	+	+	+
65	' ,177	()	(0512) 55-29-04	+	+	+
66	' ,62	(-)	(05662) 22-488, (097) 402-71-95	+	+	-
67	' ,97, .2	" ' - " ()	(05662) 4-15-03	+	+	-

68	,38	" "	(041)4152010	+	+	-
69	,66 ()		048-7317704; 7317703;	+	+	+
70	,55	" "	(048) 715-10- 25, (0482) 39- 06-18	+	+	+
71	,67 ()	" "	8(05632) 6-15- 54, (05632) 6- 23-42	+	+	-
72	,14		(0532) 69-42-62	+	+	+
73	,21	-	(0532) 69-09-46 (093)562-81-25	+	+	+
74	,22	-	(0532)57-21-64, 57-21-66	+	+	+
75	,371	-	(04637)53-982 (093)753-38-28	+	+	+
76	,101/1		(046) 3738595	+	+	+
77	,12	-	(0362) 26-67- 53,26-65-85	+	+	-
78	,14		(065)632-21-83, (050) 904-57-17	+	+	+
79	,26		(0692) 55-56- 43, 45-36-99	+	+	+
80	,20	" "	(0645) 702514, (06452) 4-43- 85, 4-51-83	+	+	+
81	,72	-	(0652)-69-07-78	+	+	+
82	,17/1	" "	(0652) 522-771	+	+	+
83	,32	-	(04733)-46-182	+	+	-
84	,15 ()		(06444)40289	+	+	+
85	,171 /10	-	(245) 53-136	+	+	+

86	,38		(055) 497-26-17	+	+	-
87	,19		(0542) 705-296	+	+	-
88	,17	SLT- Service ()	(0542) 78-10-13	+	+	+
89	,2	" "	(0352) 26-30- 13, 23-17-97	+	+	-
90	,1/24	" "	(047) 44-46- 614,(047) 44- 46-134	+	+	+
91	,101		(0312) 661-297	+	+	+
92	,12		(057) 717-13- 39, 702-16-20	+	+	+
93	,3	()	(057) 734-97- 24, 712-51-81	+	+	-
94	,18	" "	(096) 595-37-46	+	+	+
95	,2		(057) 758-10- 39; 758-10-40	+	+	+
96	,1		(03142) 42-258	+	+	+
97	,5		(0552) 29-60-42	+	+	+
98	,28		(0552) 43-40-33	+	+	+
99	,35		(0552) 420-235	-	-	+
100	,10/1	-	(0382) 723-241, 723-240	+	+	+
101	,71		(0472) 435-389	+	+	+
102	,146, .102	" "	(0472) 563-478, 500-354, (096) 505-63-63	+	+	+

103	.77-		(0462) 601585	+	+	+
104	,1		(0462) 724-872, 724-949	+	+	-
105	,6	()	(0372) 90-81-89	+	+	+
106	,105 ()		(0372) 55-48- 69,90-13-11	+	+	+
107	,265	()	(0372) 58-43-01	+	+	+
108	,5		(05449) 40-707	+	+	-
109	,3	" - "	(050) 373-73-71	+	+	+
110	,5	(.)	(050) 324-43-01	+	+	-

GB

WARRANTY COUPON

**When purchasing the product,
please require its checking before you;**

BE SURE

**that the goods sold to you, are functional and complete
and that the warranty coupon is filled in correctly.**

This warranty coupon confirms the absence of any defects in the product you purchased and provides for free of charge repair of the product failed through the fault of the manufacturer throughout the period of warranty service and free of charge repair.

Failing the presentation of this coupon, in case of its improper filling in, infringement of factory seals (if any), and also in cases indicated in the warranty obligations, the claims are not accepted, and no warranty service and free of charge repair is made!

The warranty coupon is valid only in the original copy with the stamp of trading organization, signature of the seller, date of sale and signature of the buyer.

CZ

ZÁRUČNÍ LIST

**Při koupi výrobku
žádejte o jeho vyzkoušení ve Vaší přítomnosti,**

PŘESVĚDČTE SE,

**že Vám prodaný výrobek je dobře fungující a kompletní
a že záruční list je vyplněn správně.**

Tento záruční list potvrzuje, že na Vámi koupeném výrobku nejsou žádné vady a zajišťuje bezplatnou opravu nefungujícího přístroje z viny výrobce, bez ohledu na dobu záruční doby.

Bez předložení tohoto listu, při jeho nesprávném vyplnění, porušení plomb výrobce (jsou-li na výrobku) a také v případech, které jsou uvedené v záručním listě, nároky se nepřijímají a záruční oprava se neprovádí!

Záruční list je platný jenom jako originál s razítkem obchodní organizace, podpisem prodávajícího, termínem prodeje a podpisem zákazníka.

RU

Saturn®

WARRANTY COUPON

ZÁRU NÍ LIST

SATURN HOME APPLIANCES S.R.O. KON VOVA 141, 13083
PRAHA 3 – ŽIŽKOV, ĚSKÁ REPUBLIKA, TEL: + 4202/ 67 108 392

Model /

Production number/Výrobní íslo/
/

Date of sell/Termín prodeje/ /

Shop stamp/Razítko obchodu/ /

Seller's signature/Podpis prodava e/ /

Buyer's Signature confirming the acquaintance and consent with conditions of free of charge maintenance service of the product, and absence of the complaints on appearance and color of the product.
Podpis zákazníka, potvrzující seznámení a souhlas s podmínkami bezplatného záru ního servisu výrobku, a také neexistence nárok na vn ěšek a barvu výrobku.



UA

Saturn®	Saturn®	Saturn®
Model / /	Model / /	Model / /
Production number / /	Production number / /	Production number / /
Name of the Trade Company / /	Name of the Trade Company / /	Name of the Trade Company / /
Stamp of the Trade Company / /	Stamp of the Trade Company / /	Stamp of the Trade Company / /
Client Address/Phone # / /	Client Address/Phone # / /	Client Address/Phone # / /
Date of Receiving/ /	Date of Receiving/ /	Date of Receiving/ /
Defect / /	Defect / /	Defect / /
Signature, Stamp / / , /	Signature, Stamp / / , /	Signature, Stamp / / , /
<i>COUPON 1</i>	<i>COUPON 2</i>	<i>COUPON 3</i>